



IVECO
MAGIRUS

HELPING PEOPLE EVERY DAY TAKES STRONG TEAMWORK.



Millions of fire fighters and emergency responders serve their neighbours every day. Helping people in emergencies, battling the forces of nature and going into burning buildings takes courage, idealism, commitment and good training. But above all, it takes technical equipment that's 100% reliable in every situation.

At IVECO MAGIRUS we see ourselves as the helpers' partner.

For many decades now, we've been supplying vehicles and equipment that not only guarantee effective assistance, but also make conditions safer, easier and more predictable during everyday operations. Time and again, it's innovations from IVECO MAGIRUS that have set new standards for the entire industry.

The revolutionary AluFire aluminium superstructure system, special fire fighting chassis, innovative cab solutions, state-of-the-art pump technology and impressive all-wheel concepts: these are a few of the reasons why fire fighting and civil protection units all over the world rely on IVECO MAGIRUS.

And in future we'll continue to stay one step ahead – and always right where we belong: at your side.



COMPACT SIZE, XXL PERFORMANCE.

Fire fighting operations and technical assistance are the basic roles of every fire brigade. Here's where small vehicles with a large range of performance prove their value every day.

Characteristics	
Gross vehicle weight	4 – 11 t
Crew	1+2 1+5 1+8
Water tank	0 – 1,500 litres
Pump output	1,000 – 2,000 l/min at 10 bar
BA In cab	0 – 4 units

THE RIGHT VEHICLE FOR EVERY OPERATION.

In the weight class from 4 to 11 t gross vehicle weight, IVECO MAGIRUS light pumper range offers a large selection of individual vehicle configurations to address the broad spectrum of requirements of fire brigades – e.g. as traditional portable fire pump vehicle with and without water tank or as light tank pumper with permanently installed rear pump. An extremely wide variety of van and forward control chassis are available. Included as standard: decades of experience and expertise, practical know-how and uncompromising quality.





A SOLID BASIS FOR SUCCESS: THE IVECO DAILY.

The DAILY is a van unlike any other. It's a light commercial vehicle with the driving comfort and driving characteristics of a passenger car. This combination makes the DAILY the ideal partner for fire brigades.

PLAYING IT SAFE IN THE FACE OF DANGER.

A solid chassis frame made of high-strength steel ensures robustness, reliability and durability – characteristics that clearly distinguish the DAILY from many other vans. The innovative suspension of the front axle makes the DAILY extraordinarily agile without having to compromise on safety or driving comfort. The payload capacity of the DAILY far exceeds its nearest competitor. With a gross vehicle weight now raised to 7 t, the payload capacity has increased by 470 kg to maximum 4.7 t. As a result, the DAILY is encroaching into areas previously reserved for 7.5-tonne trucks. Fire brigades are taking advantage of the opportunity to haul even more gear and a more comprehensive range of equipment. The four doors of the double cab as standard are ideal for fire fighters: alternate entry and exit on both sides is no problem at all. The engines of the DAILY model series comply with the practical requirements encountered during operations. High torques available across a very broad range enable rapid deployment while providing optimal comfort and low exhaust emissions at the same time.



All-terrain capability on request

The DAILY is also available with an Achleitner PIAS all-wheel system as an option. Twin-tyres with max. 7 t gross vehicle weight; single-tyres with max. 5.5 t / 6.1 t gross vehicle weight.

- 1 High-terrain capability, single-tyred all-wheel chassis with compact, individually configurable superstructure.
- 2 With the DAILY Integrale, the crew cab is integrated in the AluFire3 superstructure. The equipment compartments are positioned low behind the rear axle; the generously proportioned crew area has a continuous floor and offers lot of space. Above, large glass surfaces provide for a bright cab interior and also guarantee optimal visibility in all directions.
- 3 The driver's cockpit is clearly and neatly arranged. The instruments – including the MAGIRUS HMI control unit – are non-reflective and easy to read. As an alternative to the manual transmission, an IVECO AGile automatic transmission is also available.



BUILD ON THE ORIGINAL: ALUFIRE 3.

MAGIRUS is the inventor of the aluminium superstructure for fire fighting vehicles. Now in its third generation, the AluFire system has proven itself a thousand times over – more versatile, intelligent, effective and successful than ever.

MUCH MORE THAN THE SUM OF INNOVATIVE DETAILS

Based on the experience with the successful AluFire system, the third generation AluFire 3 has been completely redesigned. Every detail of the entire system reflects a focus on functionality and practical benefits for the user in everyday operations.

One of the main strengths of AluFire 3 is its flexibility: the modular arrangement of the basic hardware and software makes it possible to implement optimal solutions to address completely different needs, requirements and expectations. There is one standardised system – encompassing all weight classes and vehicle types, from TSF (portable fire pump vehicles) to HLF (technical assistance tank pumpers) and from 4- to 40-tonne weight.

Special materials and structures specifically developed for MAGIRUS have been designed to withstand high stress over the long-term.

Refined down to the smallest detail, AluFire 3 is a sophisticated superstructure system that anticipates the needs of the users. But high-tech electronics has not an end in itself, in fact it is specifically targeted to increase, support and ensure functionality. One unique feature is the MAGIRUS CAN bus control system: redundant data lines for all of the main functions (e.g. pump function) in combination with highly intelligent splitter modules ensure extremely high reliability and excellent fault management. All functions are integrated and have a standardised user interface. The reduced wiring complexity minimize the likelihood of errors and facilitates the integration of additional options.

1,2 Superstructures can also be installed on Mercedes or MAN chassis.

3 The IVECO EuroCargo chassis with double cab is an alternative to the IVECO DAILY. Variants from 7.49 t to 11 t GVW are available. Two breathing apparatuses in the direction of travel are a popular option.





Space-saving roller shutter system

Narrow roller-shutter guides increase the usable space. You gain room for additional equipment. The mounting in the super-structure create more space on the roof for installing large-volume storage boxes.

Efficiency

An Energy-Management-System permanently monitors that electrical systems not in use are switched off and thus helps keep the vehicle's energy consumption down.

See and be seen

All lighting systems both internal and external are available in the most modern LED technology.



Load carrying solution

Highly stable sandwich panel shelves are extremely strong. Countersunk screws prevent injuries and damage to equipment.

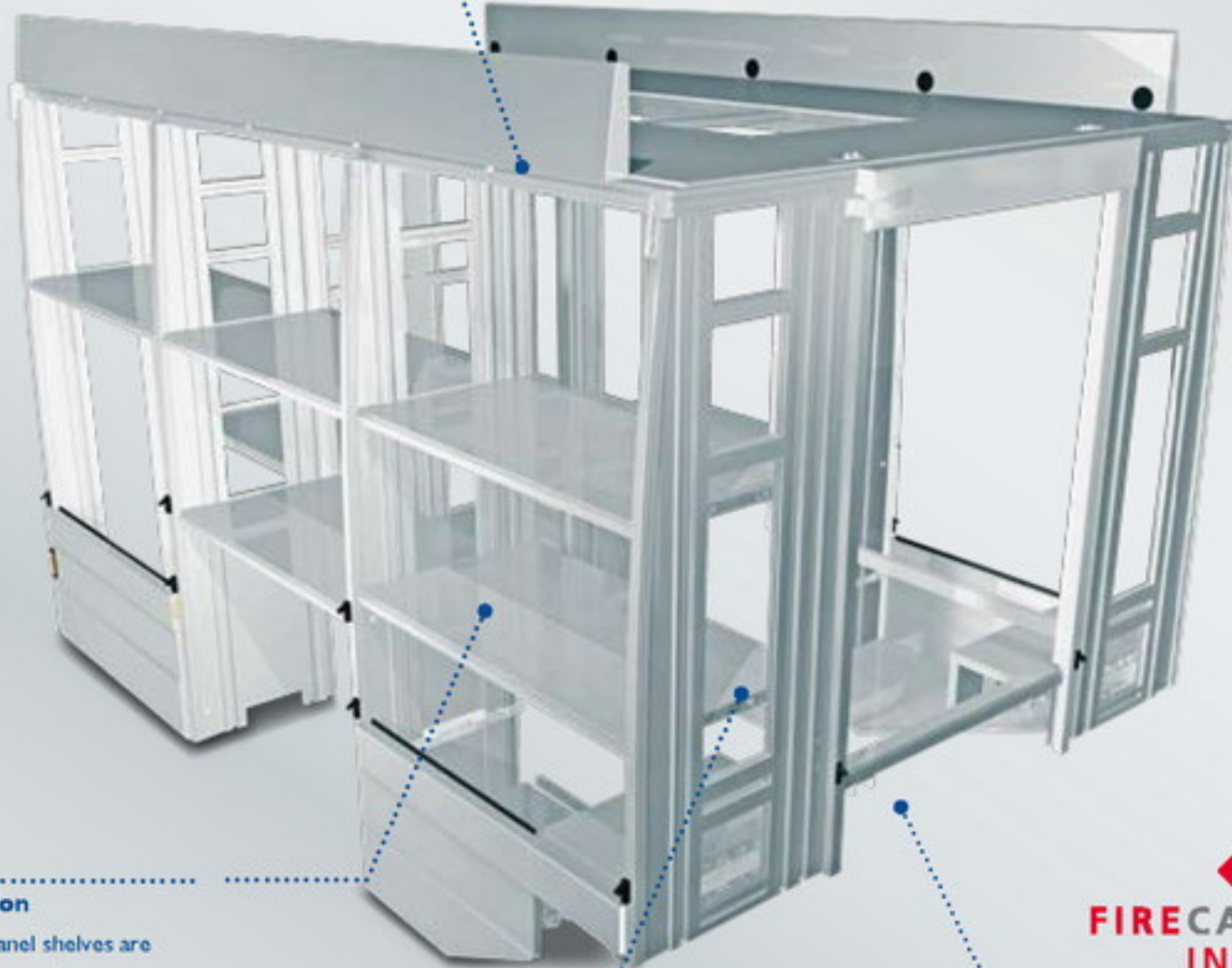


Three-dimensional flexibility

360° around aluminium supporting bands provide complete loading flexibility: from the floor to the ceiling, the entire space can be used to store equipment. Panel shelves can also be inserted without the need to remove any components.

Robust, light, uncomplicated.

The tough and insensitive anodised aluminium profiles makes them extremely durable. Less components for less weight makes maintenance and repair easier. We also give a 12-year rust through warranty – only in combination with a maintenance contract.



FIRECAN compatible

A standardised interface between super-structure and components enables the exchange of components from different manufacturers (plug-and-play) as well as a central diagnostic system for the built in components.



WE PUT THE FIRE UNDER REAL PRESSURE.

Whether it's a permanently installed or a portable fire pump: our fire fighting technology lets you attack the fire rapidly and efficiently.

MANY MODELS, ONLY ONE CLAIM: HIGH PERFORMANCE AS STANDARD.

No matter which vehicle is being outfitted, from MAGIRUS you will get two-stage centrifugal fire pumps as standard – including all of the following benefits:

- Compact, robust, sturdy construction
- Minimum engine load, low noise, eco-friendly
- insensitive to cavitation
- MAGIRUS "Primatic" fully automatic priming device
- Service-friendly
- High reliability
- Suitable for pumping-out operation
- High suction capacity
- Wastewater-resistant
- Compact dimensions, low weight

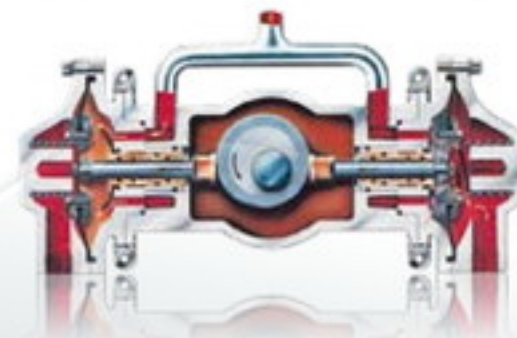
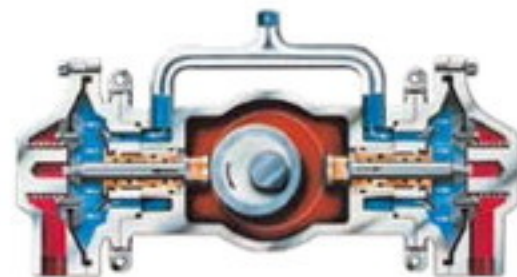
The MAGIRUS "Primatic" pump priming system is the heart of our pump. It works highly reliable and resistant to wear and tear. Its design is based on the membrane pump, which is well-known for being particularly insensitive to dirt.

Switching on and off of the priming system is controlled directly from the pump working pressure – without any additional, mechanical, hydraulic or electrical assistance.



MAGIRUS pump control unit HMI
(human/machine interface)

Modern, state-of-the-art operating system that can be used quickly and without problems even without computer experience.



MAGIRUS "Primatic"

The pump priming system guarantees high suction capacity.

ALTERNATIVE PUMP CONCEPTS



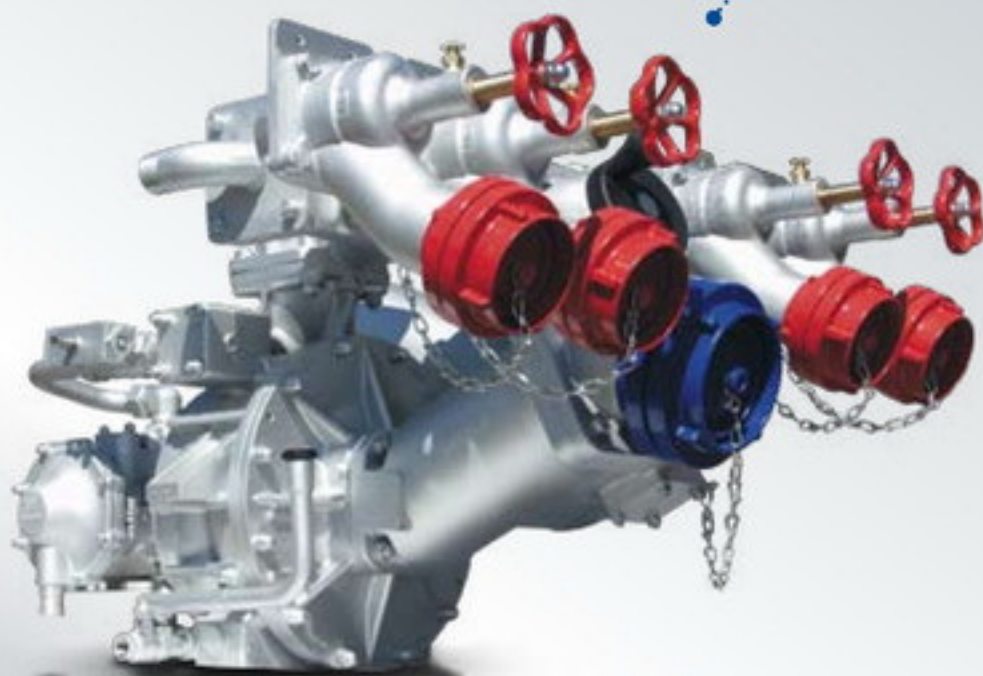
Portable fire pump

For operation within a superstructure, the MAGIRUS FIRE is the best portable fire pump on the market, as it can be used in continuous operation without the need for hearing protection. An integrated exhaust pipe carries exhaust gases away. That means the portable fire pump can be operated right from the moment the roller shutters are opened. The portable fire pump is connected to the water tank and to the rapid water delivery device or (as an option) to the quick attack hose reel. The water is supplied from the water tank; it is also possible to draw water from hydrants, open bodies of water or other pumps. All of the required piping and fittings are provided.



Permanently installed MAGIRUS pump

The low pump control stand is ergonomically designed for easy operation. The pump valve on the A suction inlet permits an inlet pressure of up to 12 bar. That means there's also no problem with high hydrant pressures or pumping water over long distances. The versatile system can be customised to satisfy fire services requests and local regulations.



Flexible Interior arrangements with plenty of storage space create vehicles that offer high tactical value during operations. Tank capacity from 0 – 1,000 litres.



Forward control vehicles

allow higher gross vehicle weights and even more loading. Accessible roofs provide additional storage space. Tank capacity from 0 – 1,500 litres.



IVECO MAGIRUS all-steel cabs

The 4-door series production cabs offer outstanding comfort and excellent visibility in all directions. They can be hydraulically tipped for optimal service access.

WHEN NOTHING ELSE MATTERS, EVERY DETAIL COUNTS.

All-rounders offering versatile loading capabilities and creative, individual detail solutions, our light pumpers are ready for every situation.

- 1 Breathing apparatus sets stowed in the crew cab shorten set-up times (optional).
- 2 Handgrips enhance safety.
- 3 The breathing apparatus sets are stored on a telescoping slide, easily accessible and ergonomically arranged to facilitate removal.
- 4 Quick attack divider with B20 hose.
- 5 Ready for action, wearing breathing apparatus while drive time (optional).
- 6 The portable fire pump is stored on a telescoping slide and easy to remove. As an optional it can also be lowered to the ground.
- 7,8 Rotating walls and trays allow maximum utilisation of available space.
- 9 Heavy-duty pull out slide for generator.



OUR RESPONSIBILITY DOESN'T END WITH THE SALE.

Our customer service is literally "service for the customer". With a range of facilities which are supplied individually according to the needs of the different fire brigades, we make sure that your readiness for action is always unrestricted.

ALL FROM ONE SOURCE ALSO MEANS: NO PRODUCT WITHOUT BACK-UP SERVICE

Guaranteeing full service readiness and keeping down-times to an absolute minimum – for fire fighting vehicles, this is a vital necessity. IVECO MAGIRUS Customer Service therefore offers you far more than just maintenance and spare parts supply: total service for the customer.

Maintenance contracts

IVECO MAGIRUS provides services from an annual inspection to a combined inspection and maintenance contract over a ten-year period which are all tailored to suit the individual requirements of fire brigades

12-year rust-through warranty

With annual inspections, we grant a 12-year rust-through warranty.

Remote diagnostics

The possibility of remotely checking the condition of vehicles and diagnosing sources of malfunction, carrying out inspections and correcting faults all reduce down-times and help cut costs.

Field service

Over 100 service technicians support customers on site. There are four central workshops and more than 60 qualified service partners available around the world.

Service hotline

You can reach us under the hotline number **+49 (0) 731 408 4080** – 24 hours a day, 7 days a week, 365 days a year.

Spare parts

More than 13,000 different original spare parts are available around the clock. Our spare parts documentation ensures long-term availability.

Repair / general overhaul

We will take on a comprehensive repair of your vehicle for example following an accident. A general overhaul will bring even older vehicles back up to today's state-of-the-art.



PARTNERS SHARE EVERYTHING. KNOWLEDGE AND EXPERIENCE TOO.

Having the very latest equipment is one thing. Being able to make full use of it, reliably and safely, is quite another. That's why we don't just sell our customers the vehicles; we also train them in additional skills.

IT'S NOT THE TECHNOLOGY WHICH IS THE FOCUS OF OUR ATTENTION, BUT THE PERSON WHO IS USING IT: YOU.

As a platform from which knowledge is spread, abilities are extended and skills are trained, the IVECO MAGIRUS Fire Fighter Academy offers our customers a real bonus.

While the VIP block is generally directed at the needs of senior members of the fire brigade, the basic block training is effectively a basic training course for all fire brigade personnel. It includes:

Real fire training

Based on practice in a gas-fired heat acclimatisation unit, participants are confronted in three solid-fuelled fire containers with real conditions where temperature and sight conditions correspond exactly with those faced in a real room fire. An extreme challenge!

Driver safety training

Since fire brigade drivers seldom have the chance in regular training to practise extreme situations with their vehicles, they get this opportunity with us. In road and 4WD training, participants can test out the limits of man and machine without danger, gaining in experience and self-confidence.

Technology training

We train you and your team in safe, error-free operation of your IVECO MAGIRUS vehicles and equipment. You will benefit from the manufacturer's inside knowledge.

The Academy is an offer made by us to our customers – but it is by no means a one-way street. We also see ourselves in the role of learners. Our aim is to use the Academy and its long-standing dialogue as a foundation for gaining pragmatic suggestions and constructive criticism to enable us to develop and construct even better products in the future.



The Academy is open
to all fire fighters. On the purchase of an IVECO MAGIRUS vehicle, certain training courses are already included.





IVECO MAGIRUS supplies everything from under one roof:

- a globally unique, complete range of vehicles for fire-fighting, aerial rescue and civil protection
- chassis, cab, equipment compartment arrangement, outfitting and pumps
- 145 years of experience and the power of continuous innovation

www.iveco-magirus.net

**Iveco Magirus
Brandschutztechnik GmbH**
Graf-Arco-Strasse 30 · D-89079 Ulm
Fax +49(0)731/408-2410
E-Mail: magirus@iveco.com
www.iveco-magirus.net

**IVECO
MAGIRUS**